



OnsiteView.com

Construction Site Monitoring



- 👁️ 1.3 to 5 Megapixel Cameras
- 👁️ Real-Time Video of Site Progress
- 👁️ Turnkey Installation Services
- 👁️ Solar and Wireless Systems
- 👁️ Calendar Archives
- 👁️ On-Demand Time Lapse Creations
- 👁️ Pan-Tilt-Zoom
- 👁️ Website Integration



How will jobsite monitoring benefit me?

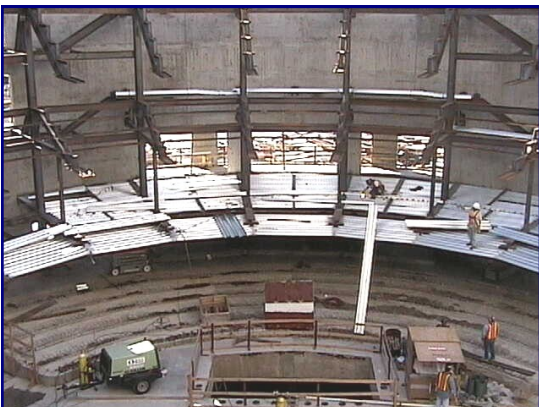
If it is true that “A picture is worth 1000 words”, then live video must be worth 10,000. Advances in technology have not necessarily made our lives easier. Most of us are busier than ever. We have all experienced the need to be in two places at once. That is where OnsiteView.com can help. With both live and archived images you will be able to:

- Reduce jobsite visits.
- Verify completed work.
- Spot problems early.
- Confirm weather delays.
- Keep projects on time.
- Reduce waste.

There are many other benefits we would like to share with you.

Call or email us today! For live demo visit:

www.OnsiteView.com/demoptz/



Call 1-866-701-2020

OnsiteView
Nationwide Construction Monitoring Packages



OnsiteView.com

Why OnsiteView.com?

We installed our first camera in 2001, before most people knew what a webcam was. As travel became more difficult and companies found themselves with projects all over the country, a way to monitor activities at multiple jobsites became important.

Camera technology has changed a lot since 2001 and with Internet access widely available, even at remote locations; obstacles to providing live images to your desktop are gone.

There are other benefits as well. Need to have a phone conference about a project? Why not have all parties looking at the same image? Integration of video and archived images to your company website can also be an effective marketing tool for your next project.

At OnsiteView.com, we can provide all of this with one phone call.....

- 👁 **Live Remote Progress Observation:** Use the static or live images from our webcams for remote monitoring of your project. OnsiteView.com hosts the image interface and archiving. You do not need a computer or software for our packages.
- 👁 **Turnkey Installation:** Give us electricity, internet, and a mounting surface. We do the rest and customize to your specific requirements. Let your staff focus on their core function and let OnsiteView.com provide the professional configuration and installation of your camera.
- 👁 **Data Storage & Site Documentation:** Mirrored hard drives with automated quadruple backups store your data in an offsite Professional Data Center. Also, see the current weather conditions, a map to the site, and all historical archives of your project - all on one simple web page. The image interface is also available on your website if desired.
- 👁 **Time Lapse Video:** Time Lapses can be created upon demand for quick viewing. At the end of your project, OnsiteView.com can provide an optional QuickTime video time-lapse of your project.
- 👁 **Consultation:** Like the idea of jobsite observation but still have questions? Call us for a free consultation. Draw on our experience and case studies.
- 👁 **Custom Solutions:** Have a unique application or challenging environment? Let our factory trained technicians have a go at it. These guys love an opportunity to showcase their ingenuity.
- 👁 **Wireless:** Want to mount a camera high on a crane or across the street away from the jobsite? No problem. OnsiteView.com has a wireless line-of-site system that transmits images from the camera to the host at distances of up to two miles.
- 👁 **Site Surveys:** Large jobsite with multiple cameras, or not sure where the best place to mount? Call us for a free site survey.
- 👁 **Solar:** Having problems getting power to the camera mount? We have several solar power applications that make this a non-issue.

